



Smart Sinus Ups

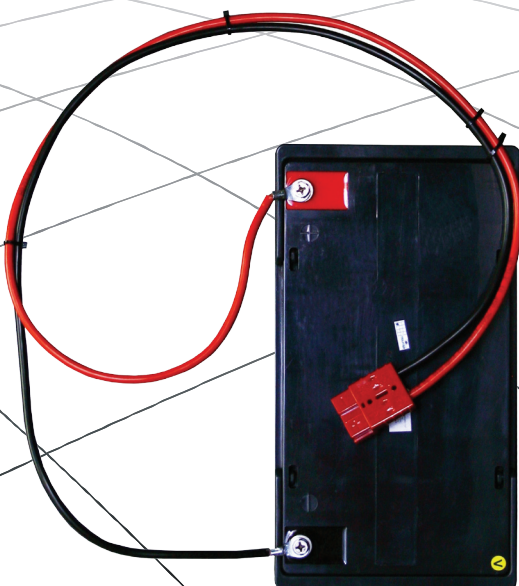
T12 b/ 1000VA / 700W

- Pure Sine wave output
- Smart technology
- Real time and calendar
- Super charger (Adjustable battery charger)
- Wide input voltage operation range
- High quality device
- Long lifetime without reparation
- 5 year warranty

Purpose

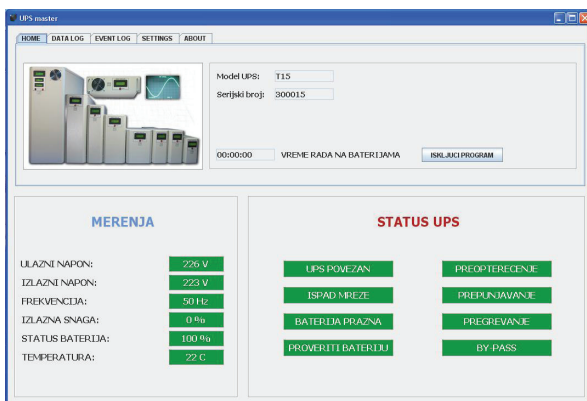


IT sector, offices, industry, medical, server rooms...

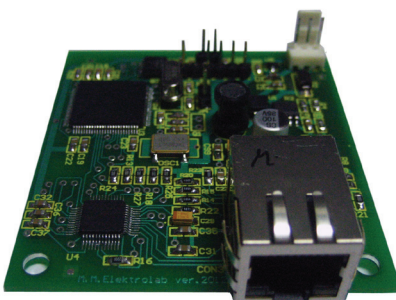


DESCRIPTION:

- Smart Sinus Ups is high quality device, generates a pure Sinusoidal voltage at the output 230V~ +/-5%. **This ups model does not have an internal battery, one external 12V is connected, battery capacity-option.**
- Super-charger digital adjustable charger, min 9Ah to max 200Ah with IU characteristics and temperature compensation. Easy to add external batteries for extended autonomy.
- Smart technology enables high reliability, fully automated and independent system.
- Long life -UPS life without repairs over 15 years (not applicable for batteries).
- Wide input voltage operation range (min 150V~ - max 290V~ without degrading power).
- Lots of quality protections.
- Saving event+log alarms in real time.
- Unique concept of Service Support, the purchase of our UPS devices gives you special software through which our product is directly connected via the Internet to the service mail of our company.
- Advanced UPS monitoring software that has the unique concept of generating its own local area network between a UPS device and one or more computers / servers.
- In situations where the mains voltage disappears and the battery is discharged or any alarms occur, UPS before shutting down, executes at the same time shutting down operating systems on all computers / servers, then the UPS device shuts off. In the event of a power failure or any alarm, the UPS sends alerts on monitors of all computers.



- An option of installing a LAN card with SNMP and HTTP protocols, which allows real-time monitoring of UPS devices anywhere in the country and abroad.



Monitoring values		Alarms	
Name	Value	Alarm type	Status
Input Voltage	214 V	Network fault	Regular
Output Voltage	214 V	Empty Battery	Regular
Output Power	0 %	Check Battery	Regular
Input Frequency	50 Hz	Overload	Regular
Battery Voltage	100 %	Overcharge	Regular
Temperature	16 C	Overheat	Regular
Serial Number	1022	By-pass	Regular

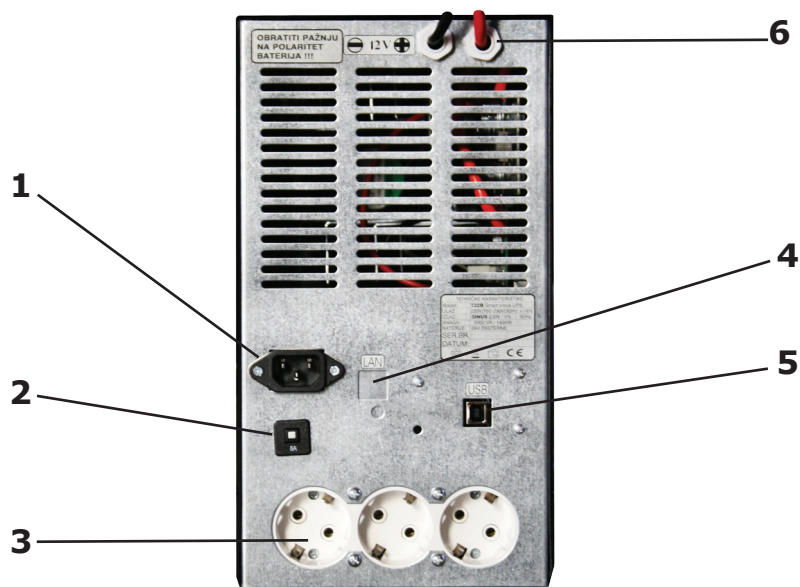
Copyright © 2012 ELEKTROLAB. All rights reserved.

TECHNICAL DATA:

MODEL:	T12b
Power:	1000 VA /700 W
INPUT:	
Nominal Voltage:	230V (min 150V – max 290V without degrading power)
Frequency:	50Hz +/- 10 %
OUTPUT:	
Connection:	Schuko CEE7 x 3
Nominal Voltage:	230V +/- 5 %
Wave form:	Pure Sine wave
Frequency:	50Hz +/- 0,01%
Transfer time:	0 msec
By-pass:	NO
Efficiency:	92% (Load=100%)
Topology:	Double conversion
PROTECTIONS:	
Protections::	Short circuit at the output / Overload / Overcharge batteries / Deep batteries discharge / Overvoltage-Undervoltage on the UPS Input / Overvoltage-Undervoltage on the UPS Output / Overheating.
INDICATOR:	
Front panel:	Alfa-numeric display 4x20 character with back light, measurement: -Input/Output voltage,Input frequency,Batteries voltage (V), Charging / Discharging battery %,Output power (VA/%), Work time on batteries,Ups status,Log alarm,Event alarm,Real time-calendar,Charge current battery,Ambiental and Heatsink temperature. -Button On-Off , Parameter setting
BATTERIES:	
Battery number and model:	One external 12V, capacity-option.
Charger:	Digital adjustable, min 9Ah to max 200Ah with IU characteristics and temperature compensation - set to 9Ah.
Expanding work autonomy:	Yes (12V)
Charging time:	6-8h
Autonomy:	Option-dependending on battery capacity.
COMMUNICATION:	
Communication:	USB / Option LAN (+Software)

SAFETY STANDARDS:	
LVD conformity :	EN 60950
EMC conformity:	EN 62040-2:2006
DIMENSIONS:	
Height:	32 cm
Widht:	17 cm
Depth:	54 cm
GENERAL:	
Green power:	Yes, adjustable
Self test battery:	Yes (10-90days and 1-60 min adjustable)
Voltage distortion:	<3%
Operating temperature range:	-20°C to +65°C
IP class:	IP 21
Safety mark:	CE
Weight:	16 kg
WARRANTY:	
Warranty:	Ups 5 years

REAR SIDE:



1. Power connector 220 VAC
2. Power fuse
3. Connection Schuko CEE7 x 3
4. LAN communication
5. USB communication
6. Wires for connection of external batteries


elektrolab
 POWER SOLUTION
www.ups-napajanja.rs

Džona Kenedija 11
 Belgrade - Kaluđerica
 Serbia
 +381 11 34 13 442
office@mmelektrolab.com